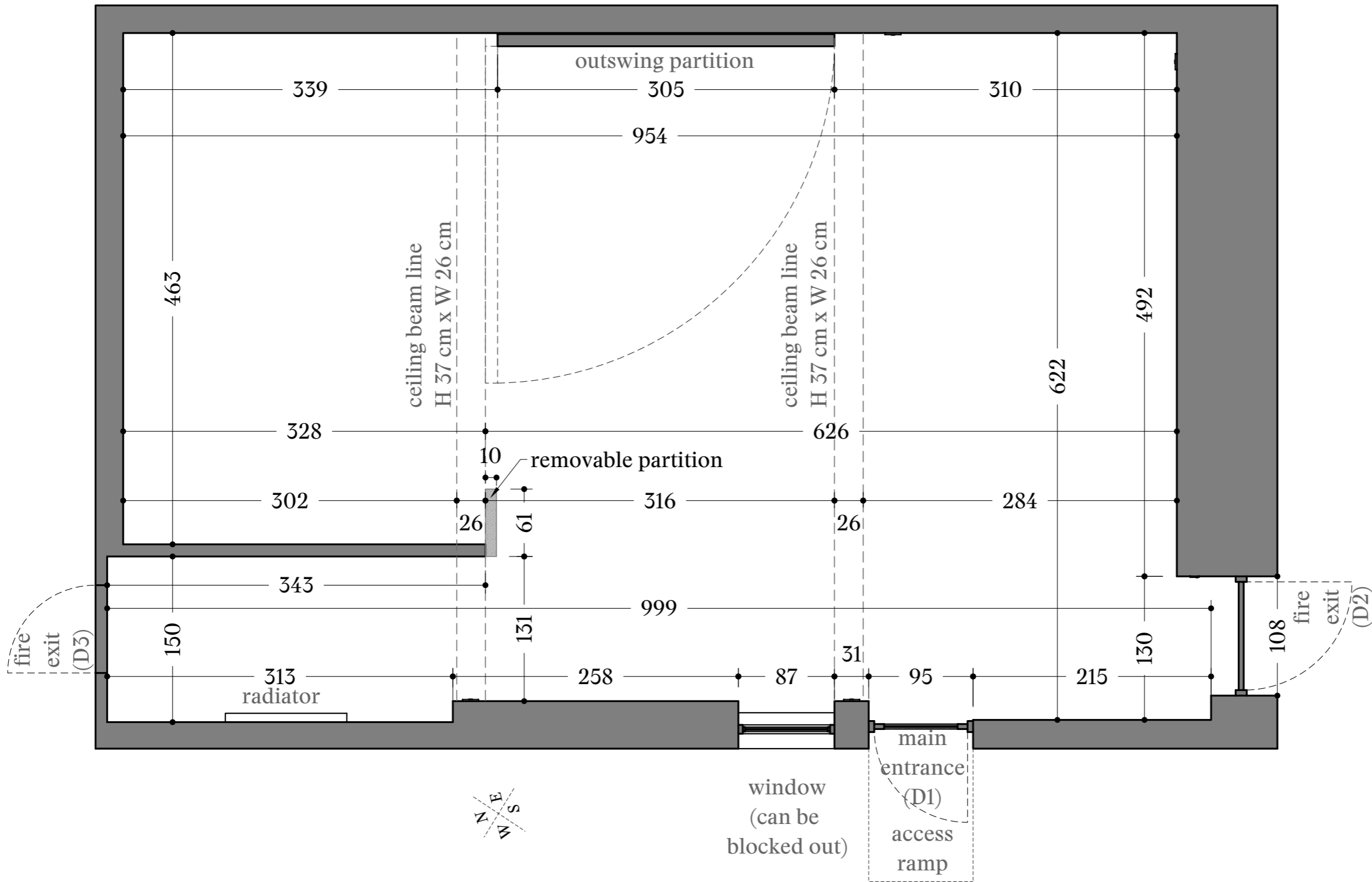


General Floor Plan

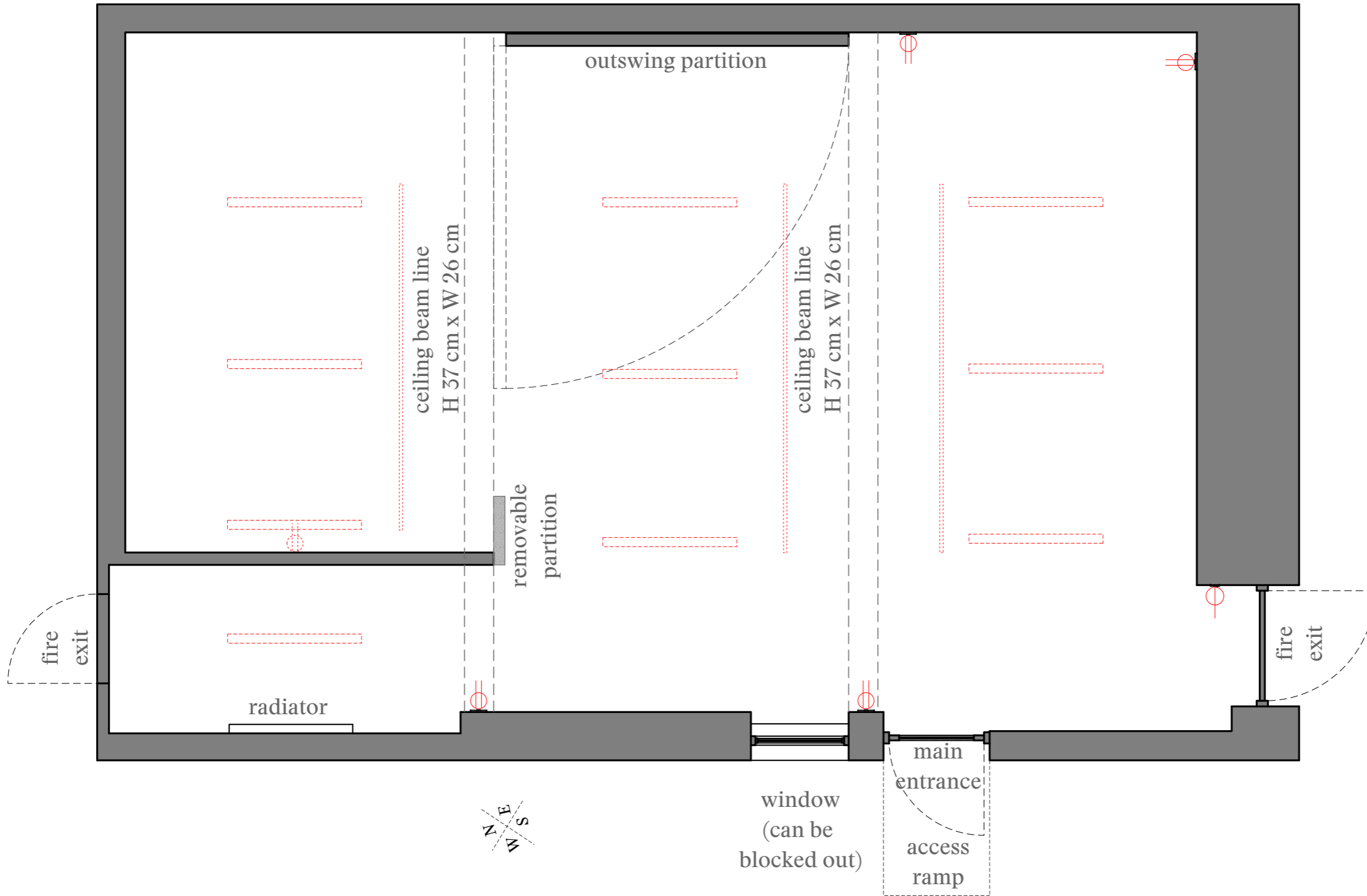


Doors' width:
 D1 = 79 cm
 D2 = 102 cm
 D3 = 79 cm

Ceiling height 340 cm
 Height until the beams 300 cm
 Area: 59,43 m²
 Perimeter: 39,64 m

NOTES:
 Drawing is not to scale.
 All dimensions are in centimetres unless otherwise stated.
 This map is to be used as a guideline only.

General Floor Plan - Electrical

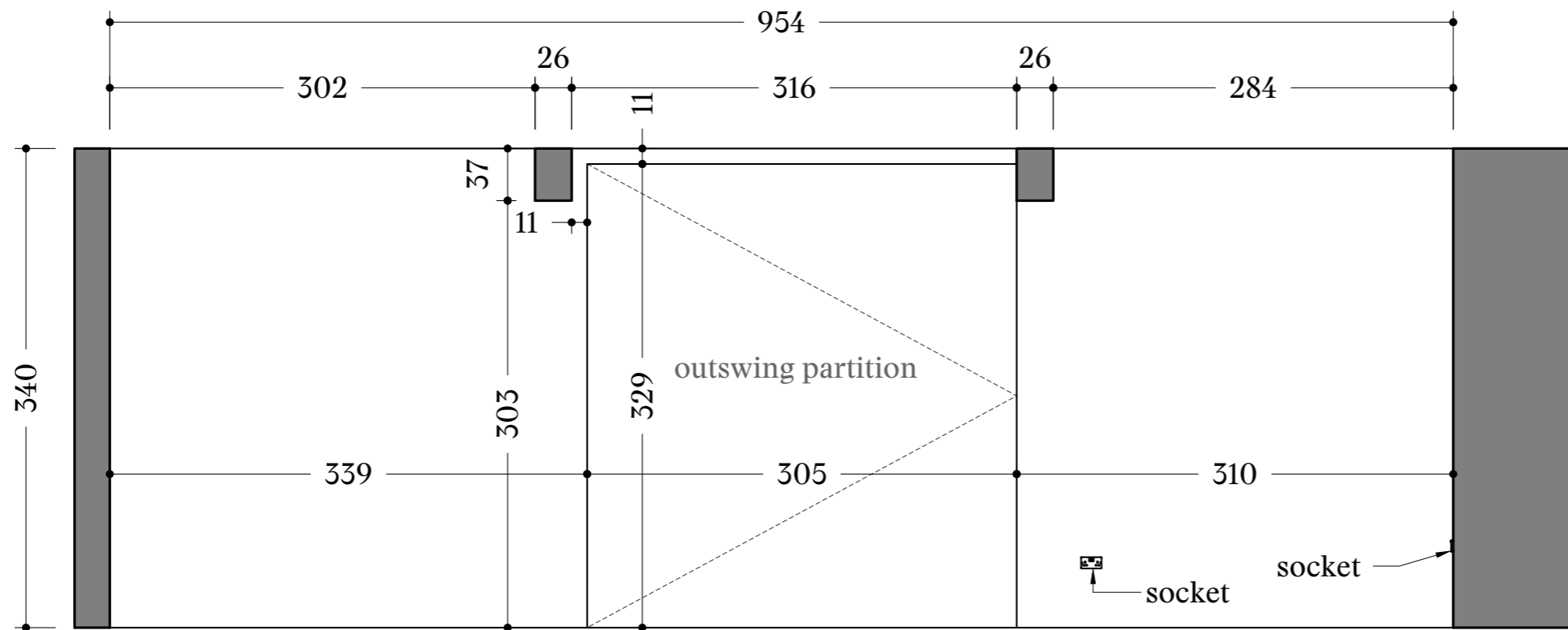


-  single socket
-  double socket
-  ceiling fluorescent light
-  ceiling spotlight runner;
adjustable lighting items available:
8 spotlights
4 floods/wallwash

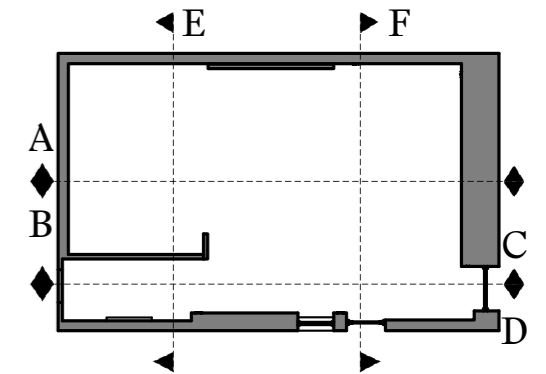
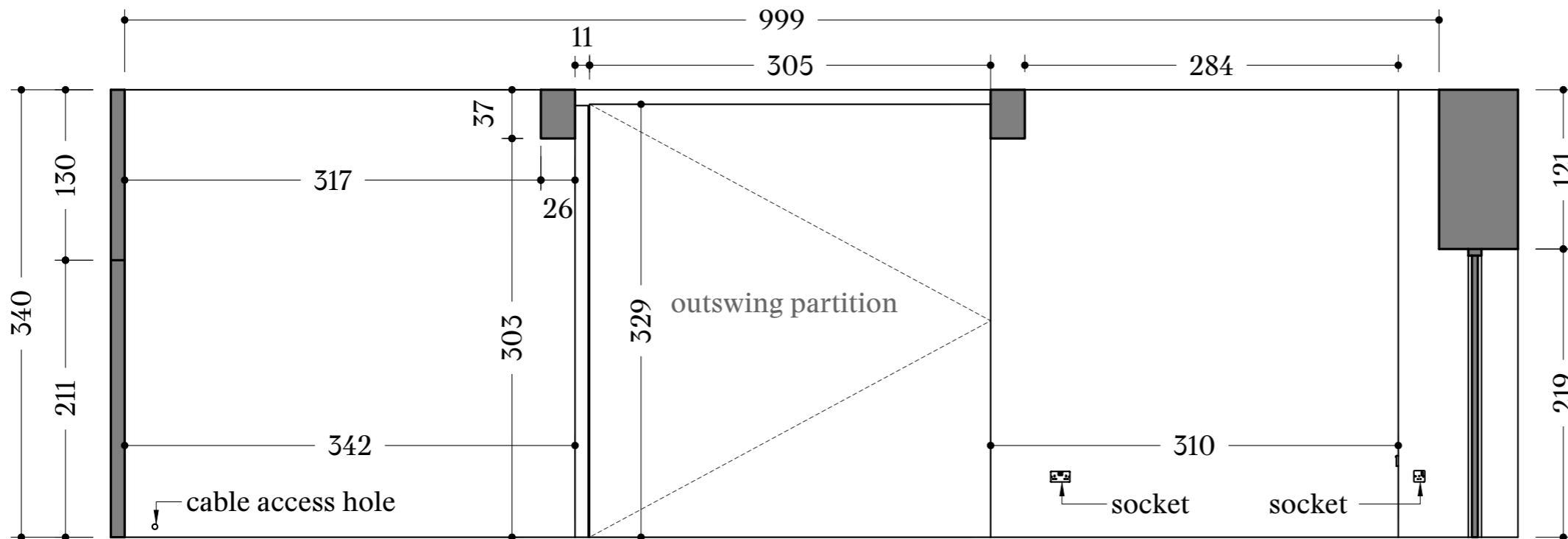
Ceiling height 340 cm
 Height until the beams 300 cm
 Area: 59,43 m²
 Perimeter: 39,64 m

NOTES:
 Drawing is not to scale.
 All dimensions are in centimetres unless otherwise stated.
 This map is to be used as a guideline only.

Side Elevation A



Side Elevation C

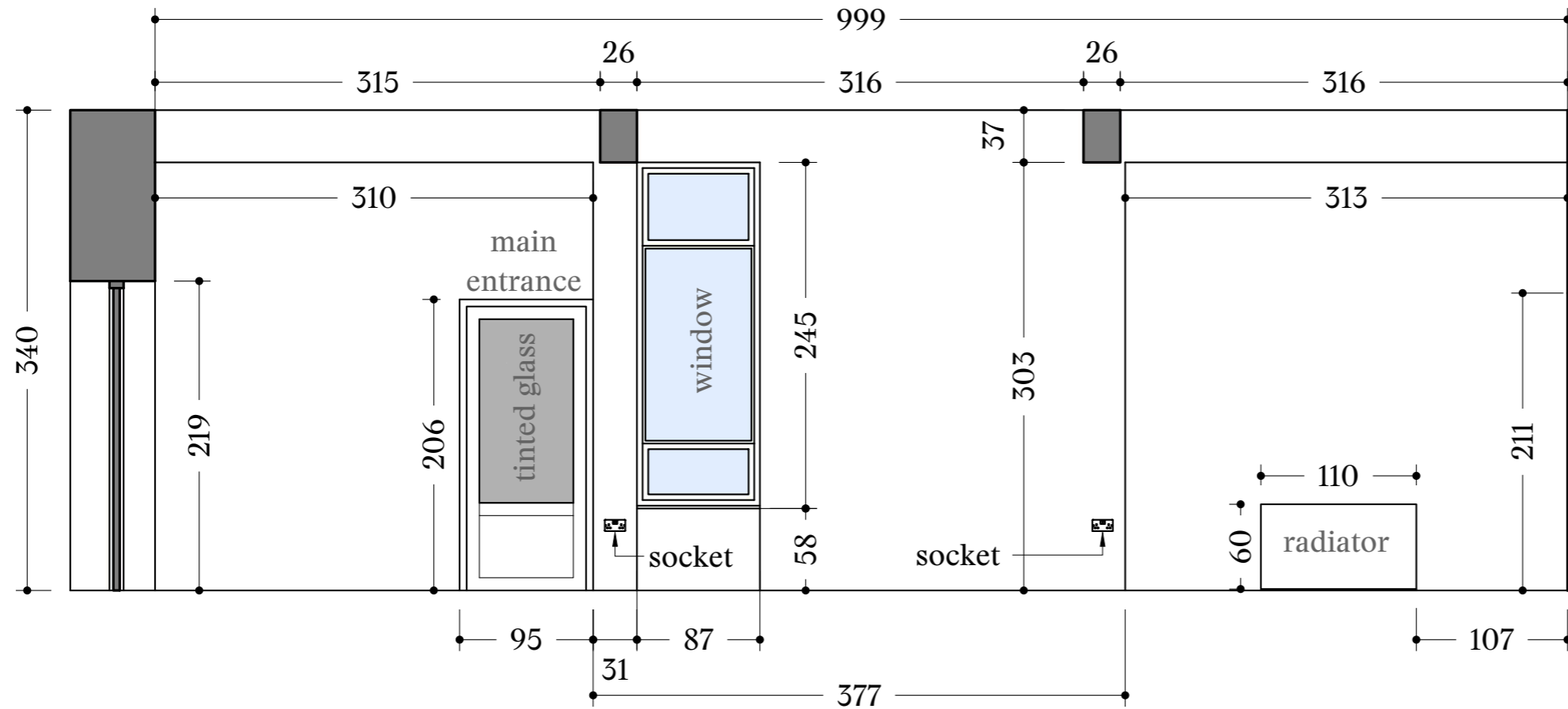


Ceiling height 340 cm
 Height until the beams 300 cm
 Area: 59,43 m²
 Perimeter: 39,64 m

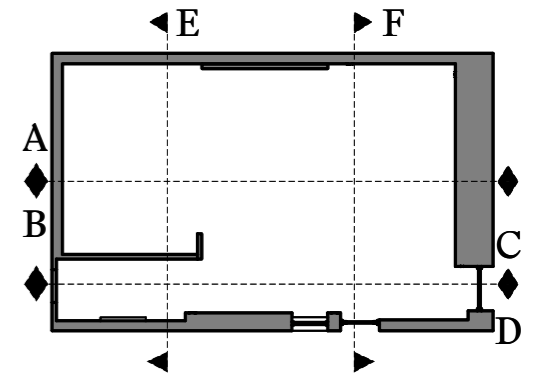
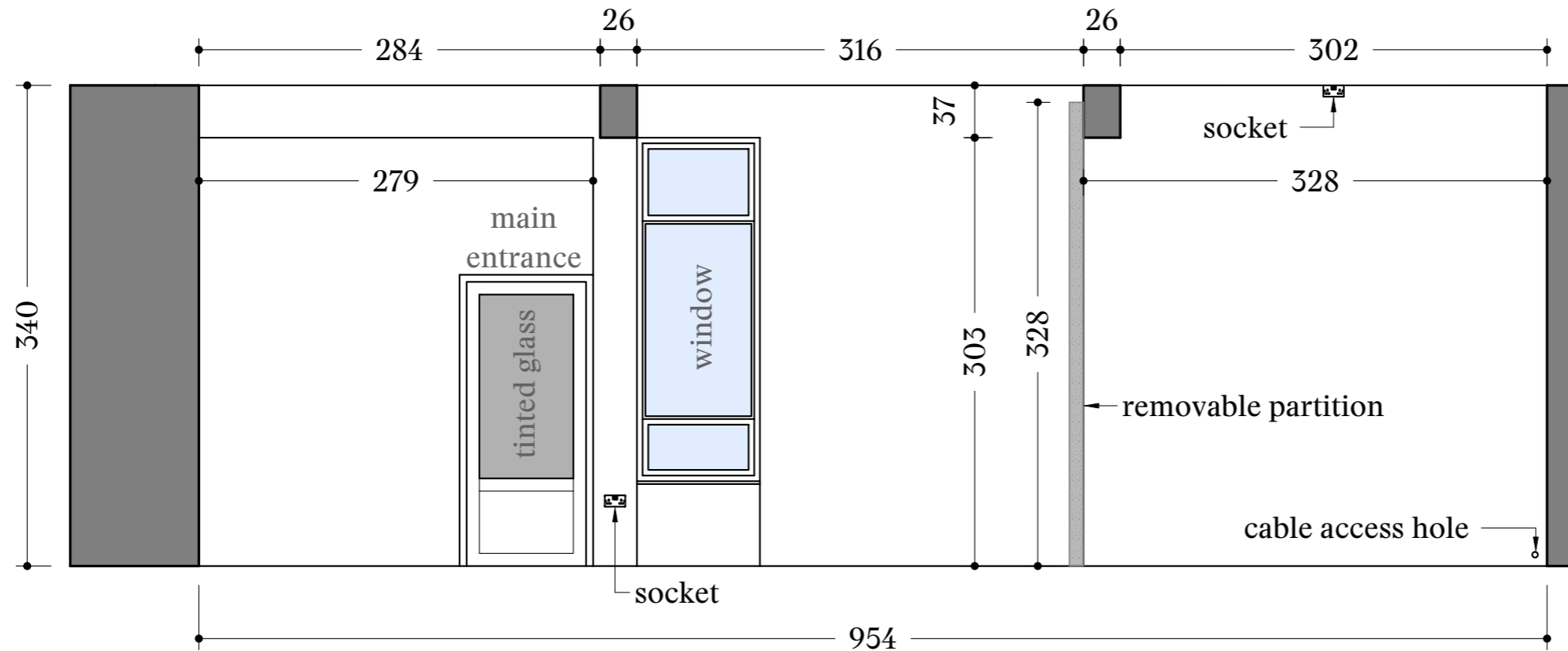
NOTES:
 Drawing is not to scale.
 All dimensions are in centimetres unless otherwise stated.
 This map is to be used as a guideline only.



Side Elevation D



Side Elevation B

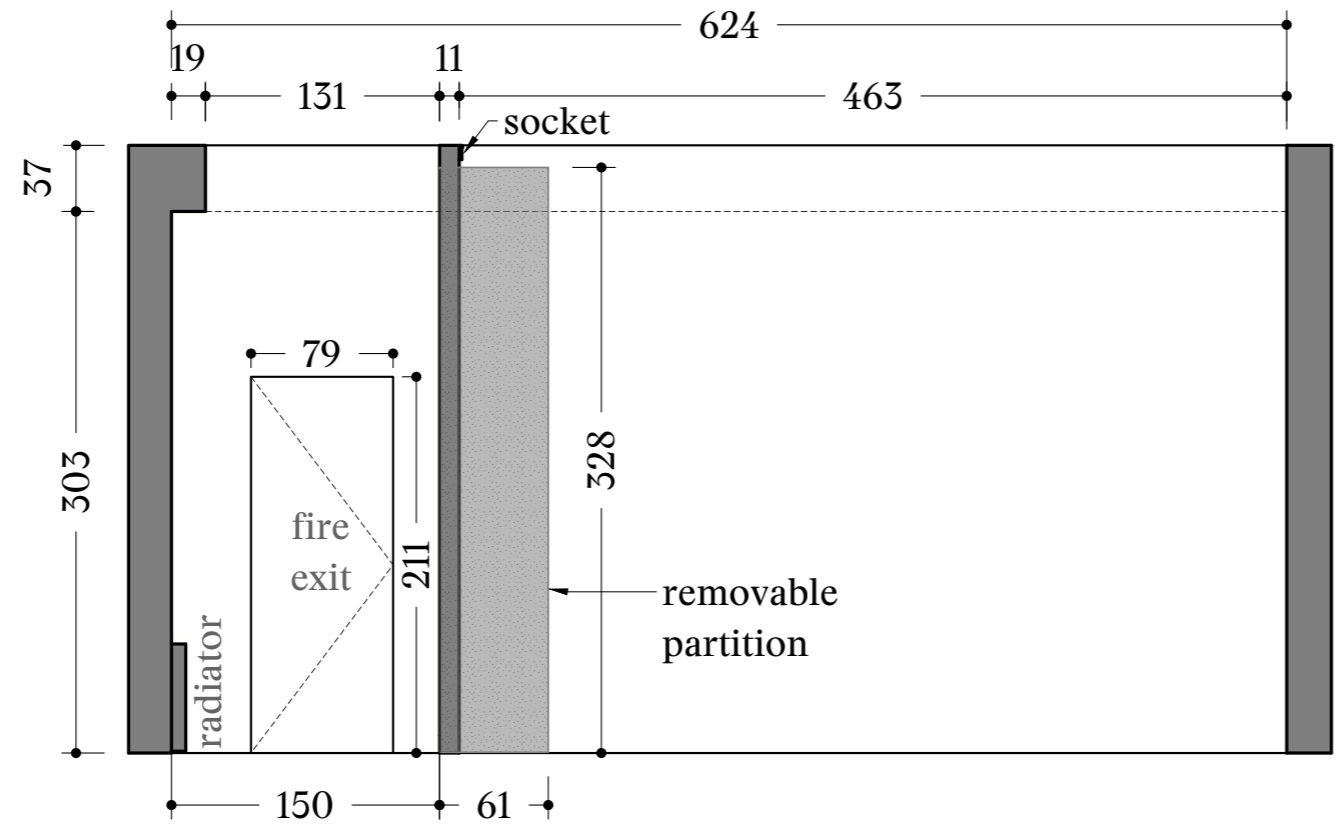


Ceiling height 340 cm
 Height until the beams 300 cm
 Area: 59,43 m²
 Perimeter: 39,64 m

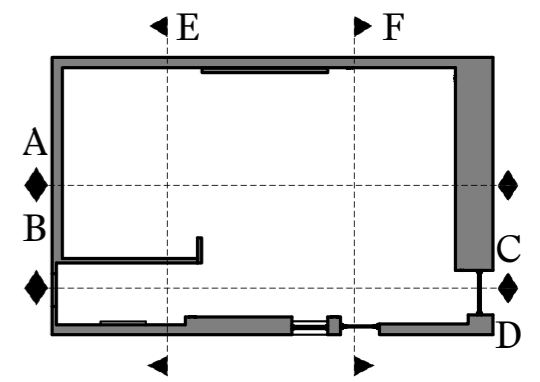
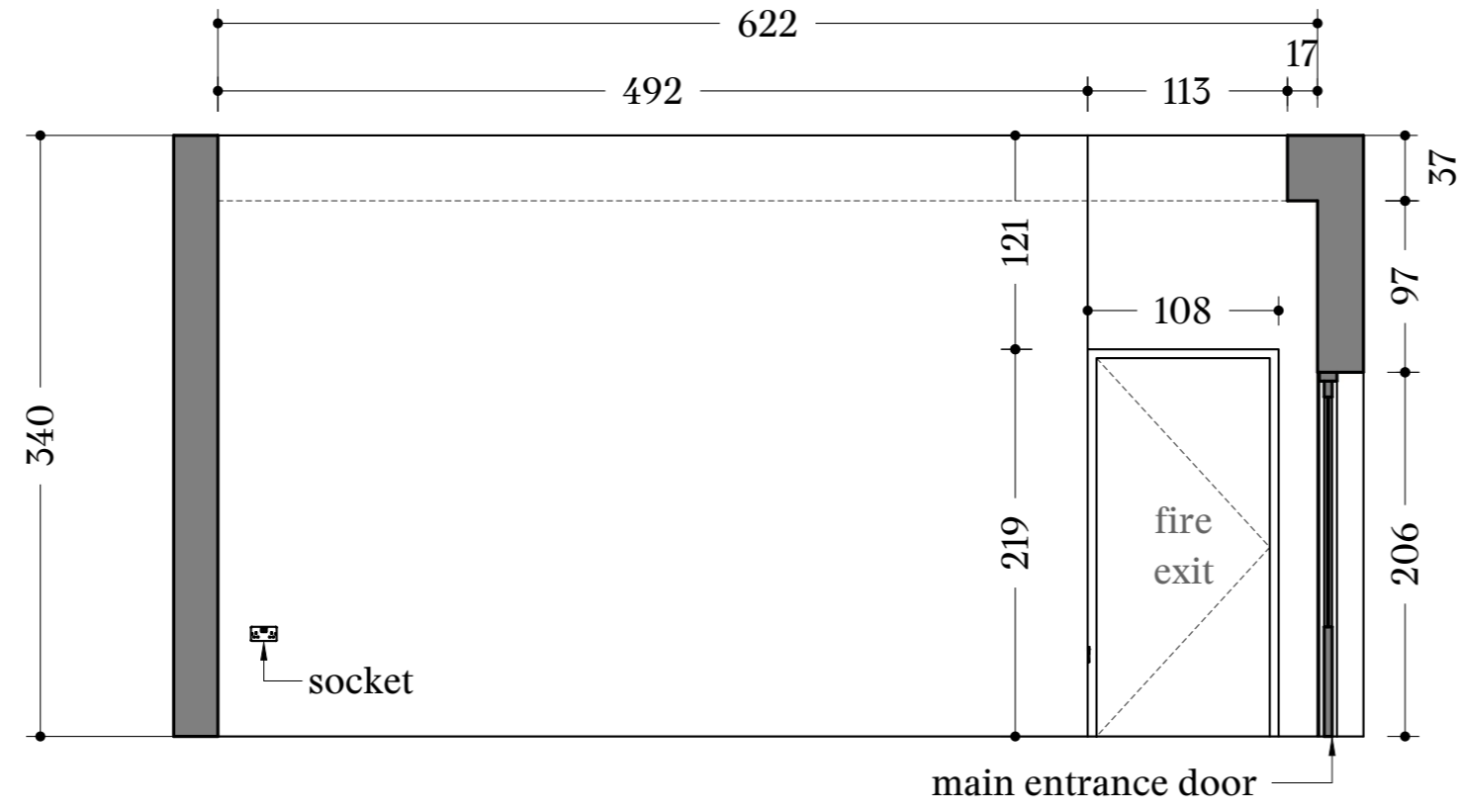
NOTES:
 Drawing is not to scale.
 All dimensions are in centimetres unless otherwise stated.
 This map is to be used as a guideline only.



Side Elevation E



Side Elevation F



Ceiling height 340 cm
 Height until the beams 300 cm
 Area: 59,43 m²
 Perimeter: 39,64 m

NOTES:
 Drawing is not to scale.
 All dimensions are in centimetres unless otherwise stated.
 This map is to be used as a guideline only.